

TOUCHSTONE

HOMES



THE SUNSTONE

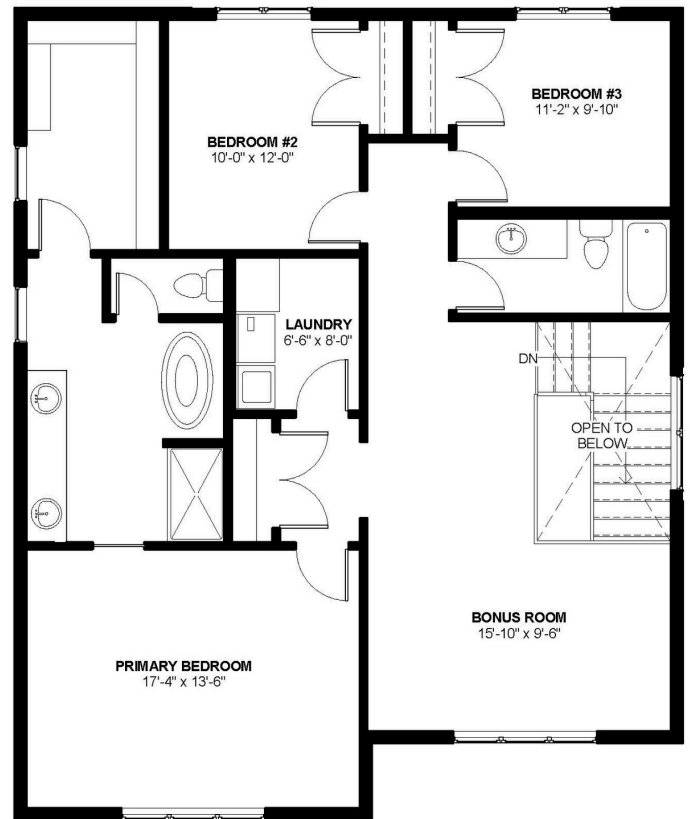
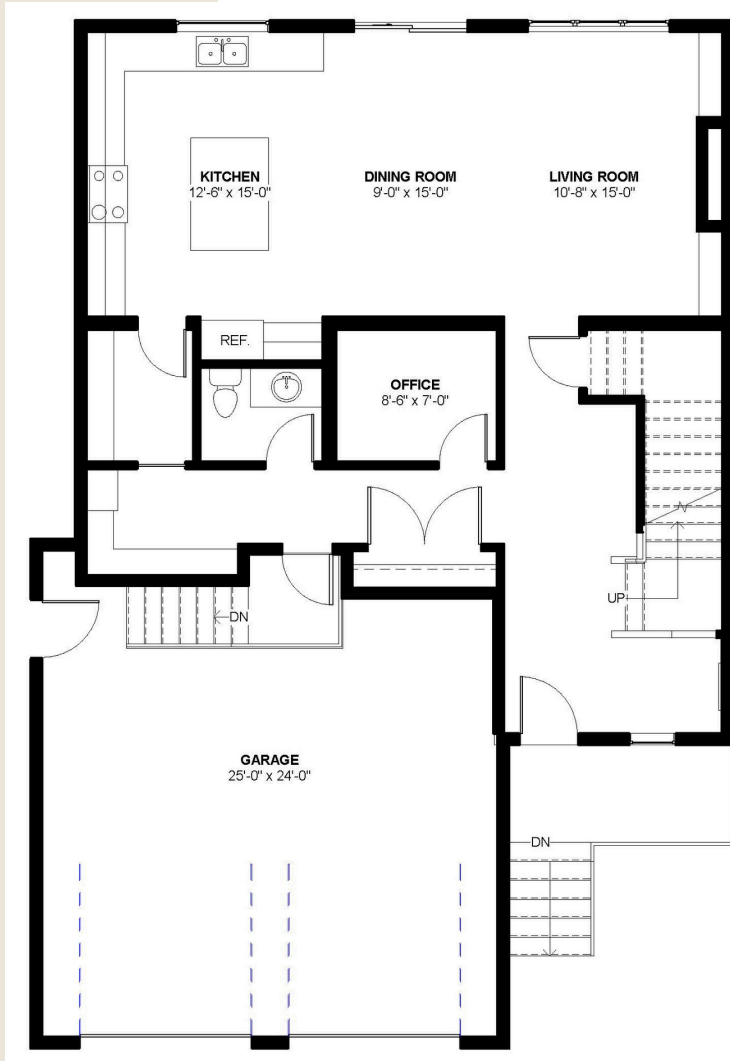
34'-6" X 54'

2509 SQFT

3 BEDROOMS, 2.5 BATHROOM

*MAY BE SHOWN WITH OPTIONAL FEATURES INCLUDING BUT NOT LIMITED TO MATERIAL, COLOURS, AND OVERALL DIMENSIONS SHOWN.

318 Taube Green



FEATURES:

- 2509 sqft
- 3 beds & 2.5 baths
- Gourmet kitchen complete with stainless steel appliances including a 36" induction stove
- Unique archways throughout the home
- Grand Foyer
- Designer lighting package
- 9'-0" Basement, 9'-0" Main Floor, and 8'-0" Second Floor
- South-East facing with an exclusive pond view
- Custom feature wall with electric fireplace and built-in cabinetry